



Product name
DINUTUXIMAB



Catalog number
DIX08251

Product description

DINUTUXIMAB: is a chimeric monoclonal IgG1 (mouse/human) against GD2. It is composed of the variable heavy chain and light chain regions of the murine anti-GD2 monoclonal antibody and the constant regions of human IgG1 heavy chain and kappa light chain.

mAb sequence

Heavy chain

>Dinutuximab_HC

EVQLLQSGPELEKPGASVMISCKASGSSFTGYNMNWRQNIKGSLEWIGAIIDPYGGTSYNQKFKGRATLTVDKSSSTAYMHLKSLTSEDSAVYYCVSGMEYWGQGTSTVSSA
STKGPSVFLAPSSKSTSGGTAALGCLVKDYFPEPVTVSWNSGALTSGVHTFPAVLQSSGLYSLSSVTVPSSSLGTQTYICNVNHKPSNTKVDKRVPEKSCDKTHTCPPCPAPPELL
GGPSVFLFPPKPKDTLMISRTPEVTCVVDVSHEDPEVKFNWYVDGVEVHNAKTKPREEQYNSTYRVVSVLTVLHQDWLNGKEYKCKVSNKALPAPIEKTISKAKGQPREPQVYV
LPPSREEMTKNQVSLTCLVKGFYPSDIAVEWESNGQPENNYKTPPVLDSDGSFFLYSKLTVDKSRWQQGNVFCSCVMHEALHNHYTQKLSLSLSPGK

Light Chain

>Dinutuximab_LC

EIVMTQSPATLSVSPGERATLSCRSSQSLVHRNGNTYLHWYLPKPKGQSPKLLIHKVSNRFSGVDRFSGSGSGTDFTLKISRVEAEDLGVYFCSQSTHVPPLTFGAGTKLELKRTVA
APSVFIFPPSDEQLKSGTASVCLLNNFYPREAKVQWKVDNALQSGNSQESVTEQDSKIDSTYLSSTLTLSKADYEKHKVYACEVTHQGLSSPVTKSFNRGEC

Product features and protocols

Key features

- 1** Purity >95%
as determined by SDS-PAGE
- 2** Labelling Arg-¹³C₆, ¹⁵N₄ | Lys-¹³C₆, ¹⁵N₂
- 3** Isotopic incorporation >99%
as determined by LC-MS/MS analysis of digested SIL-mAb

Other features

Expression System	CHO cell line
Protein content	Quantitation is carried out by UV Absorbance at 280 nm
Formulation	20 mM histidine sucrose 5% polysorbate 20 0.01% pH 5.5 – 6.5

Product preparation

For product preparation we recommend the following steps:

- Briefly centrifuge the tube before opening
- Reconstitute by adding the appropriate volume of ultrapure water for a final concentration of 200 µg/ml (e.g. 50 µl for 10 µg or 250 µl for 50 µg)
- Vortex gently to insure complete dissolution
- Wait 15 minutes at Room temperature before proceeding further
- Vortex gently again and centrifuge briefly

Product storage

The product is lyophilized and shipped at room temperature. **Store at -80 °C upon receipt.**

After reconstitution, the protein can be preserved at 4°C for a few weeks.

Avoid multiple freeze-thaw cycles

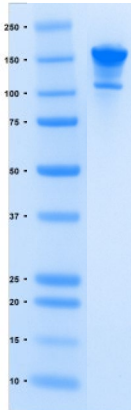
How to use our product



SIL mAbs allow to overcome the process variability since they are added at the very beginning of a sample preparation. This has positive impact on your analyte quantification, especially if the analyte interacts with other species commonly present within the matrix (1).



Supporting information



SDS-PAGE gel analysis of **DINUTUXIMAB** protein in non-reducing/ non heated conditions (NR/NH)
Stained with Coomassie blue

References

1. **G.Picard, D. Lebert, et al.** PSAQ standards for accurate MS-based quantification of proteins: from the concept to biomedical applications, *J. Mass Spectrom.* 2012, 47, 1353-1363



The product is intended for research use only. Not for diagnostic or therapeutic use.

Legal

This product is licensed under U.S. Patent No. 7,396,688 and foreign counterparts from E. I. du Pont de Nemours and Company. The purchase of this product conveys to the buyer the nontransferable right to use the purchased amount of the product for research and development only. Information about licenses for other uses is available from: E. I. du Pont de Nemours and Company; Attn: Associate Director, Commercial Development; DuPont Experimental Station E268; 200 Powdermill Rd.; Wilmington, DE 19803; 1-877-881-9787 (voice), 1-302-695-1437 (fax), licensing@dupont.com.