



**Product name** ALEMTUZUMAB



**Catalog number** ALZ10131-liquid

## Product description

**Alemtuzumab** is a monoclonal antibody that binds to CD52, used to treat B-cell chronic lymphocytic leukemia (CLL) and multiple sclerosis.

**Similar products:** Natalizumab (TYZ13211), Rituximab (RIX08221), Ocrelizumab (OCZ10231)

## mAb sequence

### Heavy chain

Alemtuzumab\_HC

QVQLQESGPGLEVRPSQTLSTCTVSGFTFTDFYMNWVRQPGRGLEWIGFIRDKAKGYTTEYNPSVKGRVMTLVDTSKNQFSLRSLSSVTAADTAVYYCAREGHTAAPFDYWGQGSVTVSSASTKGPSVFP  
LAPSSKSTSGGTAALGCLVKDYFPEPVTVSWNSGALTSGVHTFPAVLQSSGLYSLSSVTVPSSSLGTQTYICNVNHKPSNTKYVDKKEPKSCDKTHTCPPCPAPPELLGGPSVFLFPPKPKDTLMISRTPEVTCVV  
VDVSHEDPEVKFNWYVDGVEVHNAKTKPREEQYNSTYRVVSVLTVLHQDWLNGKEYKCKVSNKALPAPIEKTISKAKGQPREPQVYTLPPSRDELTKNQVSLTCLVKGFYPSDIAVEVWESNGQPENNYKTTTP  
PVLDSGDSGFFLYSKLTVDKSRWQQGQVFVSCSVMHEALHNHYTQKLSLSLSPGK

### Light Chain

Alemtuzumab\_LC

DIQMTQSPSSLSASVGDRTVITCKASQINIDKYLNWYQQKPGKAPKLLIYNTNQLQTGVPSRFSGSGSGTDFTFTISSLQPEDIATYYCLQHISRPRTFGQGTQVEIKRTVAAPSVFIFPPSDEQLKSGTASVVCLL  
NNFYPREAKVQWVKDVALQSGNSQESVTEQDSKDYSLSTLTSKADYEKHKVYACEVTHQGLSSPVTKSFNRGEC

## Product features and protocols

### Key features

- 1** Purity >95%  
as determined by SDS-PAGE
- 2** Labelling Arg-<sup>13</sup>C<sub>6</sub>, <sup>15</sup>N<sub>4</sub> | Lys-<sup>13</sup>C<sub>6</sub>, <sup>15</sup>N<sub>2</sub>
- 3** Isotopic incorporation >99%  
as determined by LC-MS/MS analysis of digested SIL-mAb

### Other features

Expression System	CHO cell line
Protein content	Quantitation is carried out by UV Absorbance at 280 nm
Formulation	NaCl 8 mg/mL; NaP dibasic 1.44 mg/mL; KCl 0.2 mg/mL; KP monobasic 0.2 mg/mL; Polysorbate 80 0.1 mg/mL; EDTA 0.0187 mg/mL; pH 7-7.4

### Product preparation

For product preparation we recommend the following steps:

1. Thaw in ice
2. Vortex gently
3. Centrifuge briefly before opening

### Product storage

The product is liquid and shipped with dry ice.

Store at -80°C upon receipt.

Once thawed, the protein can be preserved at 4°C for a few weeks.

### Avoid multiple freeze-thaw cycles

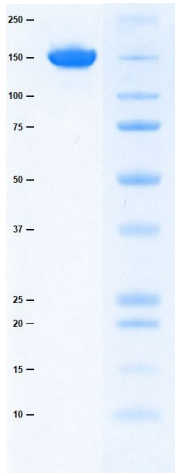
## How to use our product



SIL mAbs allow to overcome the process variability since they are added at the very beginning of a sample preparation. This has positive impact on your analyte quantification, especially if the analyte interacts with other species commonly present within the matrix (1).



## Supporting information



SDS-PAGE gel analysis of **ALEMTUZUMAB** protein in non-reducing/ non heated conditions (NR/NH) Stained with Coomassie blue.

## References

1. **G.Picard, D. Lebert, et al.** PSAQ standards for accurate MS-based quantification of proteins: from the concept to biomedical applications, *J. Mass Spectrom.* 2012, 47, 1353-1363



The product is intended for research use only. Not for diagnostic or therapeutic use.

## Legal

This product is licensed under U.S. Patent No. 7,396,688 and foreign counterparts from E. I. du Pont de Nemours and Company. The purchase of this product conveys to the buyer the nontransferable right to use the purchased amount of the product for research and development only. Information about licenses for other uses is available from: E. I. du Pont de Nemours and Company; Attn: Associate Director, Commercial Development; DuPont Experimental Station E268; 200 Powdermill Rd.; Wilmington, DE 19803; 1-877-881-9787 (voice), 1-302-695-1437 (fax), licensing@dupont.com.