



**Product name** ABATACEPT  
Labelled standard



**Catalog number** ORF90261

## Product description

Labelled Abatacept is a recombinant, stable isotope labelled, human fusion protein consisting of extracellular domain of human cytotoxic T-lymphocyte-associated antigen 4 (CTLA-4) linked to the Fc portion of human IgG1. Labelled Abatacept is designed for use as an internal standard for quantitative analysis of Abatacept in plasma samples.

Abatacept is a selective T cell co-stimulation modulator indicated for treatment of rheumatoid arthritis.

**Similar products:** Labelled Rituximab, Labelled Tocilizumab-like

## Fc-fusion protein sequence

MHVAQPAVVLASSRGIASFVCEYASPGKATEVRVTVLRQADSQVTEVCAATYMMGNELTFLDDSICTGTSSGNQVNLTIQGLRAMDTGLYI  
CKVELMYPPPYLIGINGTQIYVIDPEPCPDSDQEPKSSDKTHTSPSPAPELLGGSSVFLFPPKPKDTLMISRTPEVTCVVVDVSHEDPEVKF  
NWWYVDGVEVHNAKTKPREEQYNSTYRVVSVLTVLHQDWLNGKEYKCKVSNKALPAPIEKTISKAKGQPREPQVYTLPPSRDELTKNQVSLTCL  
LVKGFYPSDIAVEWESNGQPENNYKTTTPVLDSGDSFLLYSKLTVDKSRWQQGNVFCFSVMHEALHNHYTQKLSLSLSPGK

## Product features and protocols

### Key features

- 1** Purity >90%  
as determined by SDS-PAGE
- 2** Labelling Arg-<sup>13</sup>C<sub>6</sub>, <sup>15</sup>N<sub>4</sub> | Lys-<sup>13</sup>C<sub>6</sub>, <sup>15</sup>N<sub>2</sub>
- 3** Isotopic incorporation >98%  
as determined by LC-MS/MS  
analysis of digested SIL-protein

### Other features

Expression System	Mammalian cells
Predicted MW	39.4 kDa
Protein content	Quantitation is carried out by UV Absorbance at 280 nm
Formulation	10 mM sodium phosphate pH7.2 50 mM sodium chloride 5% sucrose 0.01% Polysorbate 80

### Product preparation

For product preparation we recommend the following steps:

1. Thaw in ice
2. Vortex gently
3. Centrifuge briefly before opening

### Product storage

The product is liquid and shipped with dry ice.

**Store at -80 °C upon receipt.**

Once thawed, the protein can be preserved at 4°C for a few weeks.

**Avoid multiple freeze-thaw cycles**

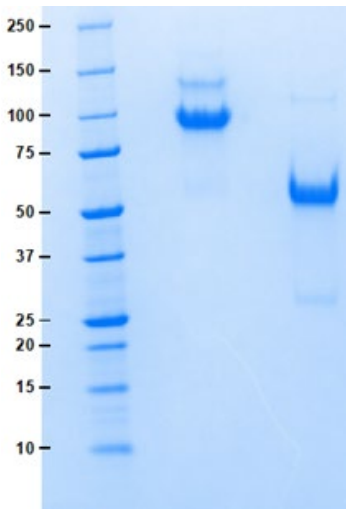
## How to use our product



SIL proteins are used as internal standards by addition at the start of a sample preparation workflow. Both Labeled and target proteins will be processed throughout the entire analytical procedure controlling for variability caused by pre-analytical treatments or incomplete enzymatic digestion (1).



## Supporting information



SDS-PAGE gel analysis of ABATACEPT labelled protein in Reducing/Heated conditions (right lane) and in non-reducing/ non heated conditions (left lane) Stained with Coomassie blue

## References

1. G.Picard, D. Lebert, et al. PSAQ standards for accurate MS-based quantification of proteins: from the concept to biomedical applications, J. Mass Spectrom. 2012, 47, 1353-1363



The product is intended for research use only. Not for diagnostic or therapeutic use.

## Legal

This product is licensed under U.S. Patent No. 7,396,688 and foreign counterparts from E. I. du Pont de Nemours and Company. The purchase of this product conveys to the buyer the nontransferable right to use the purchased amount of the product for research and development only. Information about licenses for other uses is available from: E. I. du Pont de Nemours and Company; Attn: Associate Director, Commercial Development; DuPont Experimental Station E268; 200 Powdermill Rd.; Wilmington, DE 19803; 1-877-881-9787 (voice), 1-302-695-1437 (fax), licensing@dupont.com.