



**Product name** AVELUMAB-Like  
Labelled standard



**Catalog number** BAH92571

## Product description

Labelled Avelumab-like is a recombinant, stable isotope labelled monoclonal IgG1-Lambda antibody containing proteotypic peptides derived from Avelumab's originator sequence. Labelled Avelumab-like is designed for use as an internal standard for quantitative analysis of Avelumab in plasma samples. Avelumab targets the immune checkpoint programmed death-ligand 1 (PD-L1) and is used to treat a number of cancers

**Similar products:** Labelled Nivolumab-like, Labelled Ipilimumab-like, Labelled Pembrolizumab-like, Labelled Durvalumab-like

## Proteotypic peptide sequences

### Heavy Chain

GLEWVSSIYPSGGITFYADTVK  
LGTVTTVDYWGQGLTVTVSSASTK

### Light Chain

LMIYDVSNR

## Product features and protocols

### Key features

- 1** Purity >95%  
as determined by SDS-PAGE
- 2** Labelling Arg-<sup>13</sup>C<sub>6</sub>, <sup>15</sup>N<sub>4</sub> | Lys-<sup>13</sup>C<sub>6</sub>, <sup>15</sup>N<sub>2</sub>
- 3** Isotopic incorporation >98%  
as determined by LC-MS/MS  
analysis of digested SIL-mAb

### Other features

Expression System	Mammalian cells
Protein content	Quantitation is carried out by UV Absorbance at 280 nm
Formulation	5 mM Histidine-HCl pH 6.0 60 mM Trehalose 0.01% Polysorbate 20

## Product preparation

For product preparation we recommend the following steps:

1. Briefly centrifuge the tube before opening
2. Reconstitute by adding the appropriate volume of ultrapure water for a final concentration of 200 µg/ml (e.g. 50 µl for 10 µg or 250 µl for 50 µg)
3. Vortex gently to insure complete dissolution
4. Wait 15 minutes at room temperature before proceeding further
5. Vortex gently again and centrifuge briefly

## Product storage

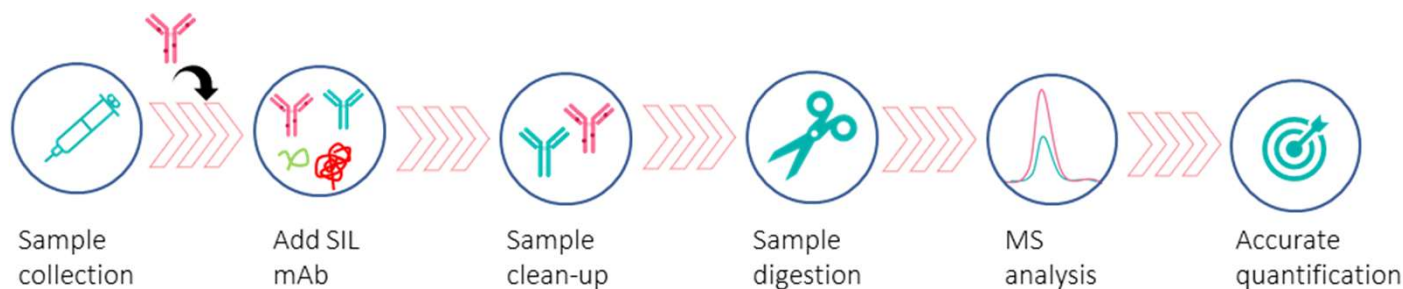
**The product is lyophilized and shipped at ambient temperature. Store at -80 °C upon receipt. After reconstitution, the protein can be preserved at 4°C for a few weeks.**

**Avoid multiple freeze-thaw cycles**

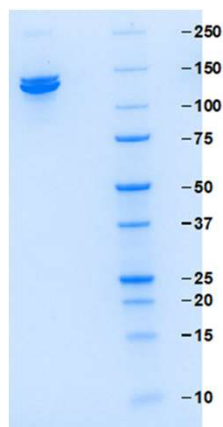
## How to use our product



SIL mAbs are used as an internal standards by addition at the start of a sample preparation workflow. Both Labeled and target therapeutic mAbs will be processed throughout the entire analytical procedure controlling for variability caused by pre-analytical treatments or incomplete enzymatic digestion (1).



## Supporting information



SDS-PAGE gel analysis of AVELUMAB-Like protein in non-reducing/ non heated conditions (NR/NH) Stained with Coomassie blue

## References

1. **D. Lebert, G.Picard, et al.** Absolute and multiplex quantification of antibodies in serum using PSAQ™ standards and LC-MS/MS, *Bioanalysis*. 2015, 7, 1237-51.



The product is intended for research use only. Not for diagnostic or therapeutic use.

## Legal

This product is licensed under U.S. Patent No. 7,396,688 and foreign counterparts from E. I. du Pont de Nemours and Company. The purchase of this product conveys to the buyer the nontransferable right to use the purchased amount of the product for research and development only. Information about licenses for other uses is available from: E. I. du Pont de Nemours and Company; Attn: Associate Director, Commercial Development; DuPont Experimental Station E268; 200 Powdermill Rd.; Wilmington, DE 19803; 1-877-881-9787 (voice), 1-302-695-1437 (fax), licensing@dupont.com.