



Product name DURVALUMAB-Like
Labelled standard



Catalog number IMH92501

Product description

Labelled Durvalumab-like is a recombinant, stable isotope labelled monoclonal IgG1-Kappa antibody containing proteotypic peptides derived from Durvalumab's originator sequence. Labelled Durvalumab-like is designed for use as an internal standard for quantitative analysis of Durvalumab in plasma samples. Durvalumab targets the immune checkpoint programmed death-ligand 1 (PD-L1) and is used to treat a number of cancers

Similar products: Labelled Nivolumab-like, Labelled Ipilimumab-like, Labelled Pembrolizumab-like

Proteotypic peptide sequences

Light Chain

VSSSYLAWYQQK
PGQAPR
LLIYDASSR

Product features and protocols

Key features

- 1 Purity >95%
as determined by SDS-PAGE
- 2 Labelling Arg-¹³C₆, ¹⁵N₄ | Lys-¹³C₆, ¹⁵N₂
- 3 Isotopic incorporation >98%
as determined by LC-MS/MS
analysis of digested SIL-mAb

Other features

| | |
|-------------------|--|
| Expression System | Mammalian cells |
| Protein content | Quantitation is carried out by UV Absorbance at 280 nm |
| Formulation | 5 mM Histidine pH 6 60 mM trehalose 0.01% Polysorbate 20 |

Product preparation

For product preparation we recommend the following steps:

1. Briefly centrifuge the tube before opening
2. Reconstitute by adding the appropriate volume of ultrapure water for a final concentration of 200 µg/mL (e.g. 50 µl for 10 µg or 250 µl for 50 µg)
3. Vortex gently to insure complete dissolution
4. Wait 15 minutes at room temperature before proceeding further
5. Vortex gently again and centrifuge briefly

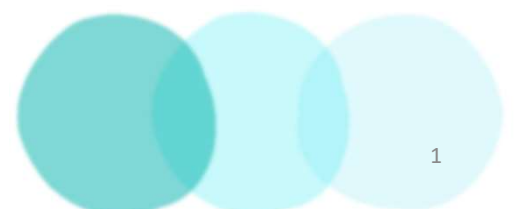
PROMISE Proteomics SAS, BHT 52A 7, parvis Louis Néel – CS20050
38040 Grenoble Cedex 9 – France

Product storage

The product is lyophilized and shipped at ambient temperature. **Store at -80 °C upon receipt.**

After reconstitution, the protein can be preserved at 4°C for a few weeks.

Avoid multiple freeze-thaw cycles



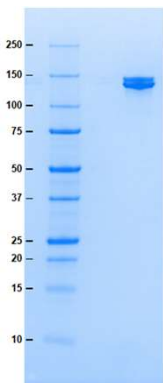
How to use our product



SIL mAbs are used as an internal standards by addition at the start of a sample preparation workflow. Both Labelled and target therapeutic mAbs will be processed throughout the entire analytical procedure controlling for variability caused by pre-analytical treatments or incomplete enzymatic digestion (1).



Supporting information



SDS-PAGE gel analysis of DURVALUMAB-Like protein in non-reducing/ non heated conditions (NR/NH) Stained with Coomassie blue

References

1. D. Lebert, G.Picard, et al. Absolute and multiplex quantification of antibodies in serum using PSAQ™ standards and LC-MS/MS, Bioanalysis. 2015, 7, 1237-51.



The product is intended for research use only. Not for diagnostic or therapeutic use.

Legal

This product is licensed under U.S. Patent No. 7,396,688 and foreign counterparts from E. I. du Pont de Nemours and Company. The purchase of this product conveys to the buyer the nontransferable right to use the purchased amount of the product for research and development only. Information about licenses for other uses is available from: E. I. du Pont de Nemours and Company; Attn: Associate Director, Commercial Development; DuPont Experimental Station E268; 200 Powdermill Rd.; Wilmington, DE 19803; 1-877-881-9787 (voice), 1-302-695-1437 (fax), licensing@dupont.com.