



Product name INFLIXIMAB
Labelled standard



Catalog number REX08151

Product description

Labelled Infliximab is a recombinant, stable isotope labelled, chimeric monoclonal antibody designed for use as an internal standard for quantitative analysis of Infliximab in plasma samples. Infliximab is a human TNF- α blocker that is used for the treatment of autoimmune diseases, such as Crohn's disease and arthritis.

Similar products: Labelled Adalimumab, Labelled Etanercept, Labelled Rituximab

mAb sequence

Heavy chain

EVKLEESGGGLVQPGGSMKLSCVASGFIFSNHWMNWVRQSPEKLEWVAEIRSKSINSATHYAESVKGRFTISRDDSKSAVYLQMTDLRTE DTGVYYCSRNYGSTDYDWGQGTTLTVSSASTKGPSVFPLAPSSKSTSGGTAALGCLVKDYFPEPVTVSWNSGALTSGVHTFPAVLQSSGLYS LSSVTVPSSSLGTQTYICNVNHKPSNTKVDKKEPKSCDKTHTCPPCPAPELGGPSVFLFPPKPKDTLMISRTPEVTCVVVDVSHEDPEVKF NWYVDGVEVHNAKTKPREEQYNSTYRVVSVLTVLHQDWLNGKEYKCKVSNKALPAPIEKTISKAKGQPREPQVYTLPPSRDELTKNQVSLTCLVKGFYPSDIAVEWESNGQPENNYKTTTPVLDSGDSFFLYSKLTVDKSRWQQGNVDFCSVMHEALHNHYTQKLSLSLSPGK

Light Chain

DILLTQSPAILSVPGERVFSFCRASQFVGSSIHWHYQQRNNGSPRLLIKAYESMSGIPSRFSGSGSDFTLSINTVESEDIADYYCQQSHSWP FTFGSGTNLEVKRTVAAPSVFIFPPSDEQLKSGTASVCLLNNFYPREAKVQWKVDNALQSGNSQESVTEQDSKSTYLSSTLTLSKADYEK HKVYACEVTHQGLSSPVTKSFNRGEC

Product features and protocols

Key features

- 1** Purity >95%
as determined by SDS-PAGE
- 2** Labelling Arg-¹³C₆, ¹⁵N₄ | Lys-¹³C₆, ¹⁵N₂
- 3** Isotopic incorporation >99%
as determined by LC-MS/MS analysis of digested SIL-mAb

Other features

Expression System	Mammalian cells
Protein content	Quantitation is carried out by UV Absorbance at 280 nm
Formulation	Lyophilized from buffer: 20 mM Sodium Phosphate pH7.2; 5% Sucrose; 0.005% Polysorbate 80.

Product preparation

For product preparation we recommend the following steps:

- Briefly centrifuge the tube before opening
- Reconstitute by adding the appropriate volume of ultrapure water for a final concentration of 200 $\mu\text{g}/\text{ml}$ (e.g. 50 μl for 10 μg or 250 μl for 50 μg)
- Vortex gently to insure complete dissolution
- Wait 15 minutes at room temperature before proceeding further
- Vortex gently again and centrifuge briefly

Product storage

The product is lyophilized and shipped at ambient temperature. **Store at -80 °C upon receipt.**

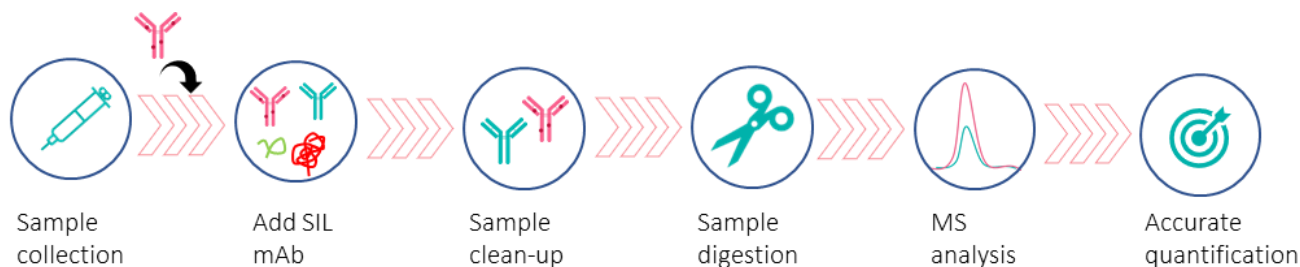
After reconstitution, the protein can be preserved at 4°C for a few weeks.

Avoid multiple freeze-thaw cycles

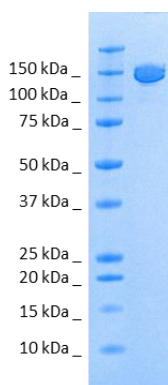
How to use our product



SIL mAbs are used as an internal standards by addition at the start of a sample preparation workflow. Both Labeled and target therapeutic mAbs will be processed throughout the entire analytical procedure controlling for variability caused by pre-analytical treatments or incomplete enzymatic digestion (1).



Supporting information



SDS-PAGE gel analysis of INFLIXIMAB protein in non-reducing/ non heated conditions (NR/NH) Stained with Coomassie blue

References

1. **D. Lebert, G.Picard, et al.** Absolute and multiplex quantification of antibodies in serum using PSAQ™ standards and LC-MS/MS, *Bioanalysis*. 2015, 7, 1237-51.
2. **J. Jourdil, D. Lebert, et al.** Infliximab quantitation in human plasma by liquid chromatography-tandem mass spectrometry: towards a standardization of the methods? *Anal. Bioanal. Chem.* 2017, 409, 1195-1205.
3. **J. Jourdil, F. Stanke-Labesque, et al.** Simultaneous quantification of adalimumab and infliximab in human plasma by liquid chromatography-tandem mass spectrometry. *Therapeutic Drug Monitoring*. 2018, 40, 417-424.
4. **M. El Amrani, E. Maarseveen, et al.** Simultaneous quantification of free adalimumab and infliximab in human plasma using a target-based sample purification and liquid chromatography-tandem mass spectrometry. *Therapeutic Drug Monitoring*. 2019, 41, 640-647.



The product is intended for research use only. Not for diagnostic or therapeutic use.

Legal

This product is licensed under U.S. Patent No. 7,396,688 and foreign counterparts from E. I. du Pont de Nemours and Company. The purchase of this product conveys to the buyer the nontransferable right to use the purchased amount of the product for research and development only. Information about licenses for other uses is available from: E. I. du Pont de Nemours and Company; Attn: Associate Director, Commercial Development; DuPont Experimental Station E268; 200 Powdermill Rd.; Wilmington, DE 19803; 1-877-881-9787 (voice), 1-302-695-1437 (fax), licensing@dupont.com.