



**Product name** Human TAU-352  
 SIL-protein



**Catalog number** TA247576

**Uniprot ID** P10636-2

## Product description

Human microtubule-associated protein Tau (MAPT) promotes microtubule assembly and stability. Tau exists in six isoforms which vary for presence or absence of specific amino acidic regions. It is the main component of the intracellular filamentous inclusions that are involved in neurodegenerative diseases (1).

Labelled TAU is a recombinant protein, stable isotope labelled (SIL), designed for use as an internal standard for quantitative analysis of TAU by mass spectrometry (MS).

**Synonyms:** fetal-TAU,ON3R

## Protein sequence

MAEPRQEFVEMDHAGTYGLGDRKDQGGYTMHQDQEGDTDAGLKAEEAGIGDTPSLEDEAAGHVTVQARMVSKSKDGTGSDDKKAKGAD  
 GKTKIATPRGAAPPQKQGANATRIPAKTPPAPKTPSSGEPKSGDRSGYSSPGSPGTPGSRSRTPSLPTPPTREPKKVAVVRTPPKSPSSAKS  
 RLQTAPVPMPLKLVKSKIGSTENLKHQPGGGKQVIVYKPVDSLKVTSCGSLGNIHHKPGGGQVEVKSEKLDKDRVQSKIGSLDNITHVPG  
 GGNKKIETHKLTFRENAKAKTDHGAEIVYKSPVVSVDTSRHLNSVSTGSIDMVDSPLATLADEVASLAKQGL

## Product features and protocols

### Key features

- 1
 Purity >90%  
 as determined by SDS-PAGE
- 2
 Labelling Uniform-<sup>15</sup>N
- 3
 Isotopic incorporation >99%  
 as determined by LC-MS/MS analysis of digested SIL-protein

### Other features

Predicted MW	36.8 kDa
Expression System	<i>E.coli</i>
Purification Tag	No tag
Protein content	Determined by UV spectroscopy at 205 nm
Formulation	Lyophilized from 50 mM Tris pH=8; 100 mM NaCl; 1 mM DTT; 1 mM EDTA buffer

Template009-datasheet protein-V01 TA247576\_V01

## Product preparation

For product preparation we recommend the following steps:

1. Briefly centrifuge the tube before opening
2. Reconstitute by adding the appropriate volume of ultrapure water for a final concentration of 200 µg/ml (e.g. 50 µl for 10 µg or 250 µl for 50 µg conditioning)
3. Vortex gently to insure complete dissolution
4. Wait 15 minutes at room temperature before proceeding further
5. Vortex gently again and centrifuge briefly

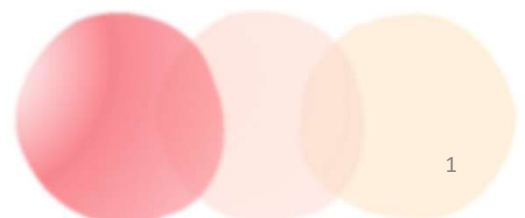
PROMISE Proteomics SAS, BHT 52A 7, parvis Louis Néel – CS20050  
38040 Grenoble Cedex 9 – France

## Product storage

The product is lyophilized and shipped at room temperature. **Store at -80 °C upon receipt.**

After reconstitution, the protein can be preserved at 4°C for a few weeks.

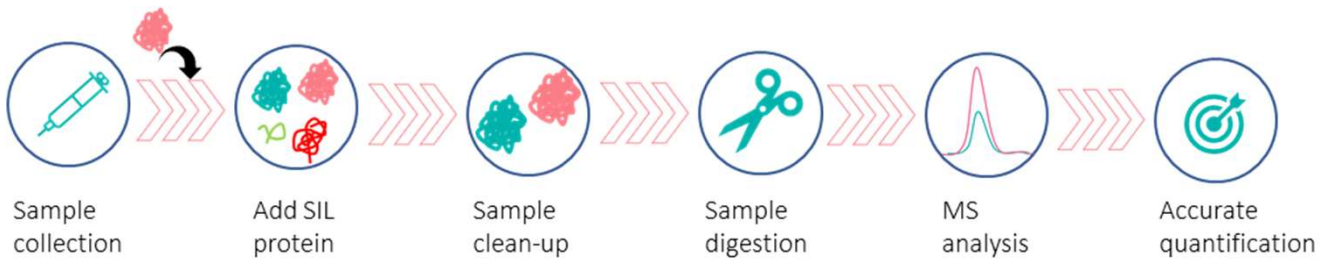
### Avoid multiple freeze-thaw cycles



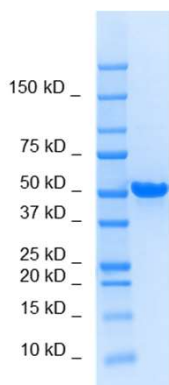
## How to use our product



SIL proteins allow to overcome the process variability since they are added at the very beginning of a sample preparation. This has potential positive impact on your analyte quantification, especially if the analyte interacts with other species commonly present within the matrix (2).



## Supporting information



SDS-PAGE gel analysis of TAU 352 protein in Reducing/Heated conditions (RH) and stained with Coomassie blue.

## References

1. **T. McAvoy et al.**, Quantification of Tau in Cerebrospinal Fluid by Immunoaffinity Enrichment and Tandem Mass Spectrometry, 2014 Clinical Chemistry 60:4
2. **G.Picard, D. Lebert, et al.** PSAQ standards for accurate MS-based quantification of proteins: from the concept to biomedical applications, J. Mass Spectrom. 2012, 47, 1353-1363



The product is intended for research use only. Not for diagnostic or therapeutic use.

## Legal

This product is licensed under U.S. Patent No. 7,396,688 and foreign counterparts from E. I. du Pont de Nemours and Company. The purchase of this product conveys to the buyer the nontransferable right to use the purchased amount of the product for research and development only. Information about licenses for other uses is available from: E. I. du Pont de Nemours and Company; Attn: Associate Director, Commercial Development; DuPont Experimental Station E268; 200 Powdermill Rd.; Wilmington, DE 19803; 1-877-881-9787 (voice), 1-302-695-1437 (fax), licensing@dupont.com.