

Product description

Human Cystatin-C (Cys-C) is a cysteine protease protein. Its dosage is an index of renal function and can be used to evaluate the glomerular filtration rate.

Synonyms: Cystatin-3, Gamma-trace, Neuroendocrine basic polypeptide, post-gamma globulin



Product name Human Cystatin-C



Catalog number CY725600

Uniprot ID P01034

Protein sequence

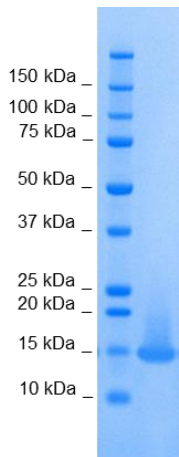
MSSPGKPPRLVGGPMDASVEEEGVRRALDFAVGGEYNKASNDMYHSRALQVVRARKQIVAGVNYFLDVELGRTTCTKTQPNLDNCPFHDQP
HLKRKAFCSFYIYAVPWQGTMTLSKSTCQDA

Product features and protocols



Purity

>95%
as determined by SDS-PAGE



SDS-PAGE gel analysis of Cystatin C protein in Reducing/Heated conditions (RH) and stained with Coomassie blue.

Other features

Predicted MW	15.7 kDa
Expression System	<i>E. coli</i>
Purification Tag	No tag
Protein content	Quantitation is carried out by Bradford protein assay.
Formulation	Lyophilized from 25 mM MES, 80 mM NaCl pH 6.0 buffer.

Product preparation

For product preparation we recommend the following steps:

1. Briefly centrifuge the tube before opening
2. Reconstitute by adding the appropriate volume of ultrapure water for a final concentration of 200 µg/ml (e.g. 50 µl for 10 µg or 250 µl for 50 µg conditioning)
3. Vortex gently to insure complete dissolution
4. Wait 15 minutes at room temperature before proceeding further
5. Vortex gently again and centrifuge briefly

Product storage

The product is lyophilized and shipped at room temperature. **Store at -80 °C upon receipt.**

After reconstitution, the protein can be preserved at 4°C for a few weeks.

Avoid multiple freeze-thaw cycles



The product is intended for research use only. Not for diagnostic or therapeutic use.