



Product name IPILIMUMAB-Like
Labelled standard



Catalog number YEH92271

Product description

Labelled Ipilimumab-like is a recombinant, stable isotope labelled monoclonal IgG1-Kappa antibody containing proteotypic peptides derived from Ipilimumab's originator sequence. Labelled Ipilimumab-like is designed for use as an internal standard for quantitative analysis of Ipilimumab in plasma samples. Ipilimumab targets the CTLA-4 protein and is used to treat Melanoma and Renal Cell Carcinoma.

Similar products: Labelled Pembrolizumab-like, Labelled Nivolumab-like

Proteotypic peptide sequences

Heavy chain

GLEWVTFISYDGNNK
YYADSVK

Light Chain

ASQSVGSSYLAWYQQKPGQAPR
LLIYGAFSR

Product features and protocols

Key features

- 1 Purity >95%
as determined by SDS-PAGE
- 2 Labelling Arg-¹³C₆, ¹⁵N₄ | Lys-¹³C₆, ¹⁵N₂
- 3 Isotopic incorporation >99%
as determined by LC-MS/MS
analysis of digested SIL-mAb

Other features

| | |
|-------------------|---|
| Expression System | Mammalian cells |
| Protein content | Quantitation is carried out by UV Absorbance at 280 nm |
| Formulation | Lyophilized from buffer: 5 mM Histidine pH 6; 60 mM trehalose; 0.01% Polysorbate 20. |

Product preparation

For product preparation we recommend the following steps:

1. Briefly centrifuge the tube before opening
2. Reconstitute by adding the appropriate volume of ultrapure water for a final concentration of 200 µg/mL (e.g. 50 µl for 10 µg or 250 µl for 50 µg)
3. Vortex gently to insure complete dissolution
4. Wait 15 minutes at room temperature before proceeding further
5. Vortex gently again and centrifuge briefly

Product storage

The product is lyophilized and shipped at ambient temperature. **Store at -80 °C upon receipt.**

After reconstitution, the protein can be preserved at 4°C for a few weeks.

Avoid multiple freeze-thaw cycles

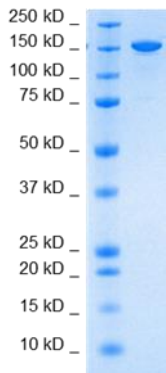
How to use our product



SIL mAbs are used as an internal standards by addition at the start of a sample preparation workflow. Both Labeled and target therapeutic mAbs will be processed throughout the entire analytical procedure controlling for variability caused by pre-analytical treatments or incomplete enzymatic digestion (1).



Supporting information



SDS-PAGE gel analysis of IPILIMUMAB-Like protein in non-reducing/ non heated conditions (NR/NH) Stained with Coomassie blue

References

1. **D. Lebert, G.Picard, et al.** Absolute and multiplex quantification of antibodies in serum using PSAQ™ standards and LC-MS/MS, *Bioanalysis*. 2015, 7, 1237-51.



The product is intended for research use only. Not for diagnostic or therapeutic use.

Legal

This product is licensed under U.S. Patent No. 7,396,688 and foreign counterparts from E. I. du Pont de Nemours and Company. The purchase of this product conveys to the buyer the nontransferable right to use the purchased amount of the product for research and development only. Information about licenses for other uses is available from: E. I. du Pont de Nemours and Company; Attn: Associate Director, Commercial Development; DuPont Experimental Station E268; 200 Powdermill Rd.; Wilmington, DE 19803; 1-877-881-9787 (voice), 1-302-695-1437 (fax), licensing@dupont.com.